

DIAGNOSTIC WELLNESS TEST



Do you have high blood pressure, diabetes, leg pain, high cholesterol, sleep apnea, headaches, dizziness, and/or family history of cardiovascular disease?

You can qualify for our 45-minute comprehensive non-invasive head to toe cardiovascular diagnostic check-up.



Echocardiogram

Examines your overall heart function. Over 60% of the general population has valvular heart disease. Approximately 40% of the population over 50 years old has diastolic dysfunction.



Carotid Artery Duplex

Examines the vessels that supply the brain with oxygen and their back-up arteries. Documents and measures plaque build-up. There is NO treatment for a completely blocked carotid artery.



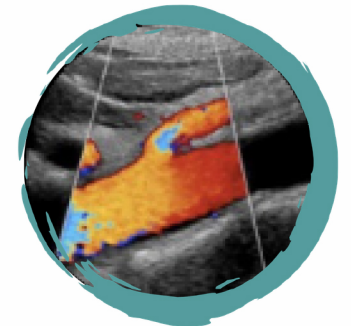
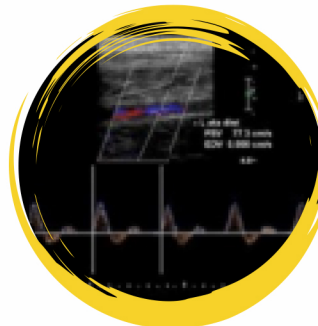
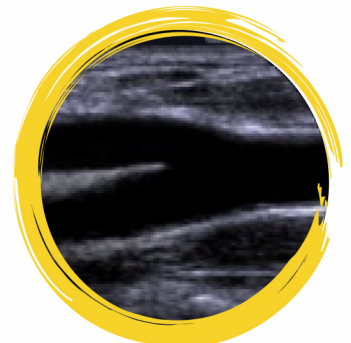
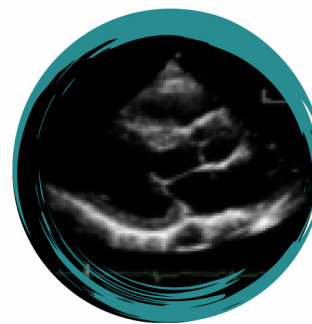
Lower Extremity Arterial Duplex

Rules out peripheral arterial disease. More than half of the population with coronary artery disease has peripheral arterial disease, yet less than 20% of the patients are checked.



Aorta-Iliac Duplex

Evaluates your two main vessels, the Inferior Vena Cava (IVC) and aorta. A dilated IVC can be an indication of right heart failure. One in six males over 60 years old have an abdominal aorta aneurysm and the survival rate is 50% if the aneurysm ruptures.



*"Keeping quality healthcare
in the neighborhood."*



ATHENS
NEIGHBORHOOD
HEALTH CENTER
ANHC